

CITY OF MURRAY CONTROL MONUMENT CARD

DESIGNATION: D8 AZI

TYPE: CONCRETE MONUMENT W/ CITY DISK

DATE SET: JUNE 2002 QUAD: MURRAY, KY.

HORIZONTAL DATUM: NAD-83 VERTICAL DATUM: NAVD-88

STATE: KENTUCKY COUNTY: CALLOWAY ZONE: KY. S 1602

NORTHING: 1745147.55 FT

EASTING: 891265.06 FT

ELEVATION: 502.45 FT (GPS)

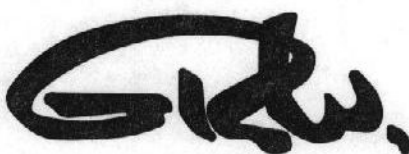
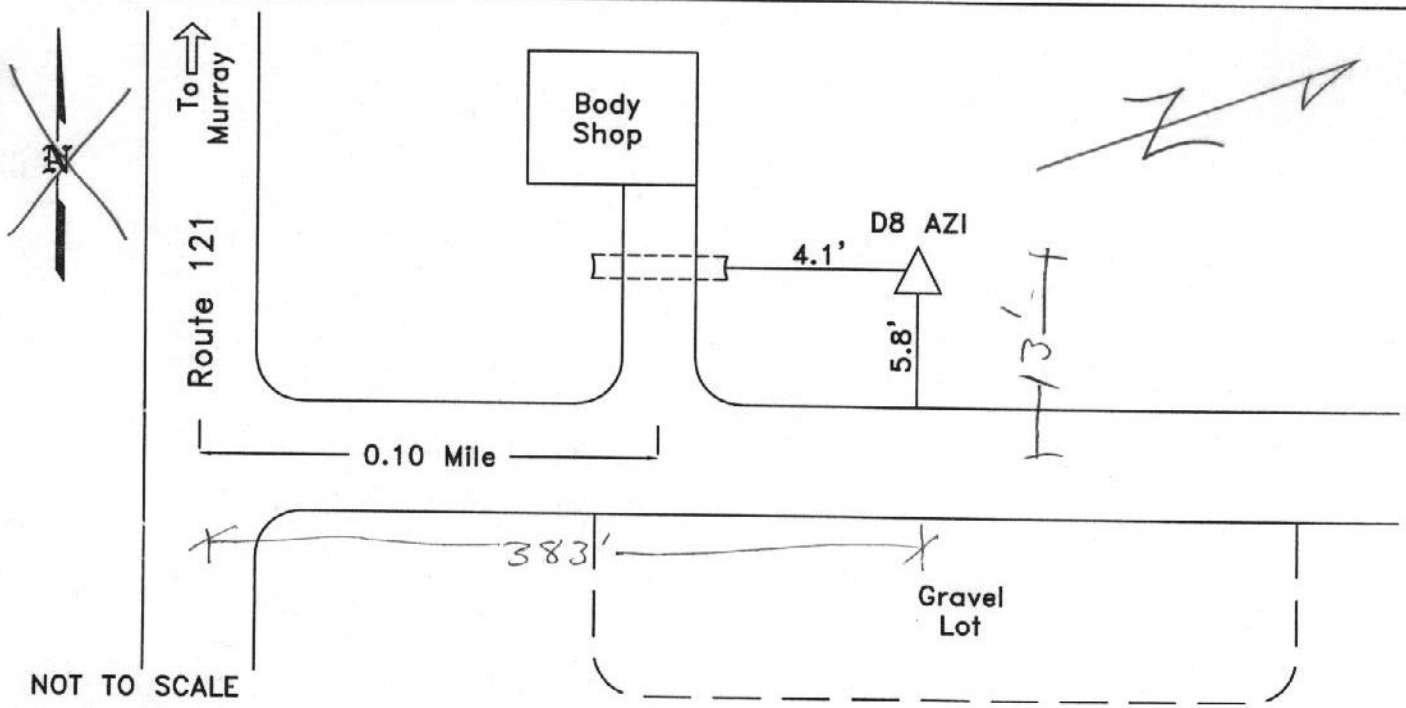
LATITUDE: N $36^{\circ}35'35.49659''$ LONGITUDE: W $088^{\circ}18'07.23846''$

SCALE:

CONVERGENCE:

PLANE AZI. TO AZI. MARK:

To Reach: From the intersection of River Rd. and State Route 121, go 0.1 mile along River Road to the station on the left.



GRW Aerial Surveys, Inc.
801 Corporate Dr. Lexington Ky. 40503
(859)223-3999